



# DEPSET-25 TOOL INSTRUCTION MANUAL

YOUR DISSOLUTION SPECIALISTS



## STEP 1:

Verify the instrument drive head, if adjustable, is set in the testing position.

## STEP 2:

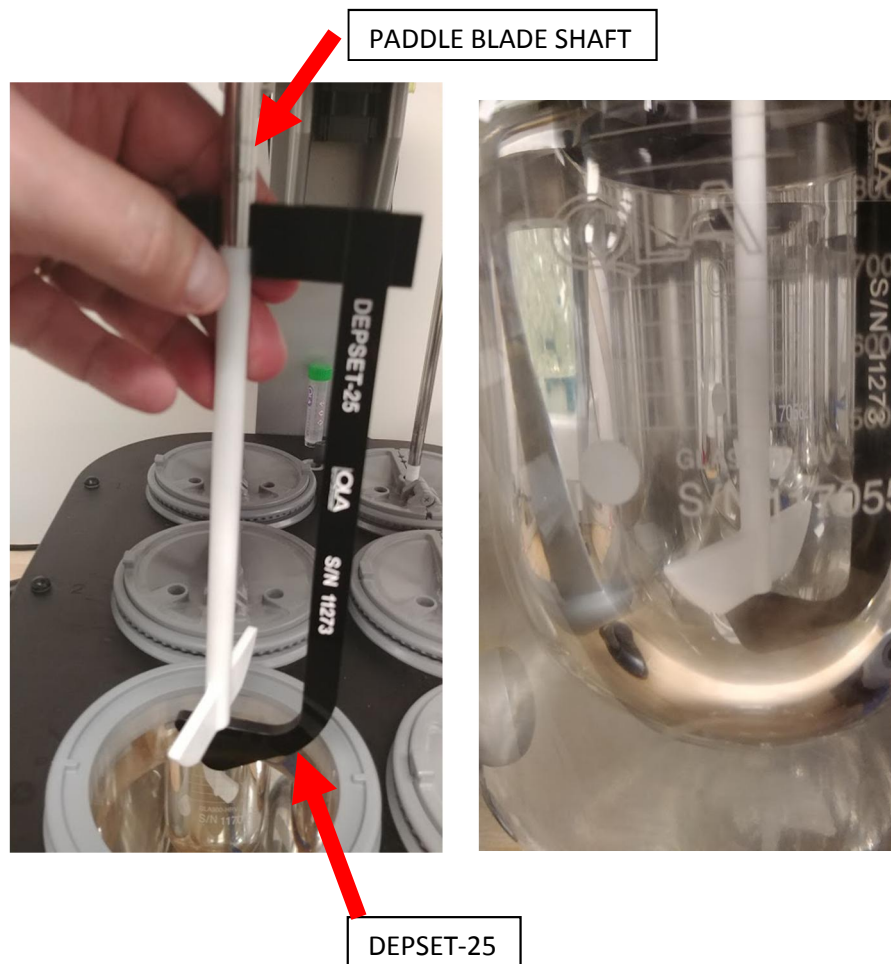
Loosen the spindle chuck or shaft collar so that the paddle shaft easily slides up and down in the spindle.

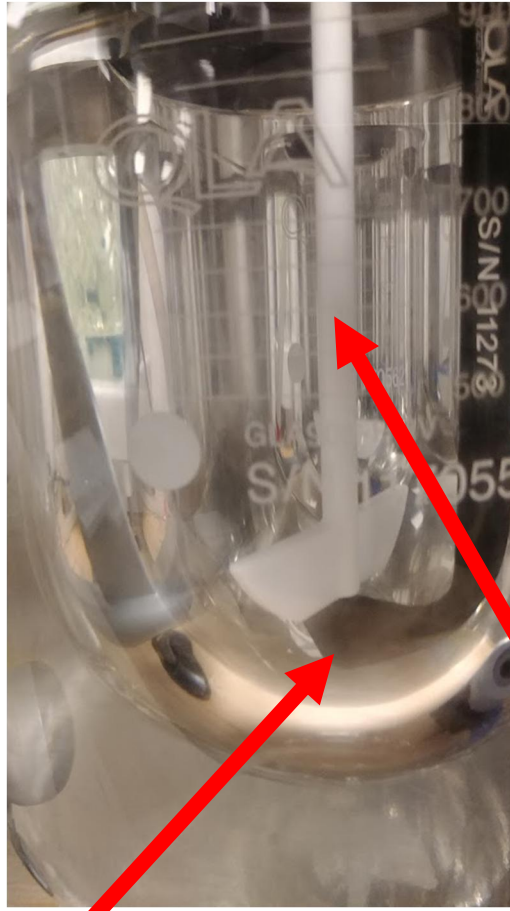


**YOUR DISSOLUTION SPECIALISTS**

Step 3:

Place DEPSET-25 tool up against the paddle blade shaft. Slide the DEPSET-25 tool and up the shaft so it is against the bottom of the paddle as shown. While holding the DEPSET-25 in place, lower the shaft until the bottom of the DEPSET-25 is against the bottom of the vessel. In this position, the paddle blade will be at the correct height.





DEPSET-25

PADDLE BLADE SHAFT

#### Step 4:

While keeping the DEPSET-25 and paddle blade shaft in this position, tighten the spindle chuck or shaft collar to secure the shaft in place to the proper height. Remove the DEPSET-25 tool. The height is now set properly.