



QUALITY LAB ACCESSORIES

DEPSET-PK TOOL INSTRUCTION MANUAL

YOUR DISSOLUTION SPECIALISTS



STEP 1:

Verify the instrument drive head, if adjustable, is set in the testing position.

STEP 2:

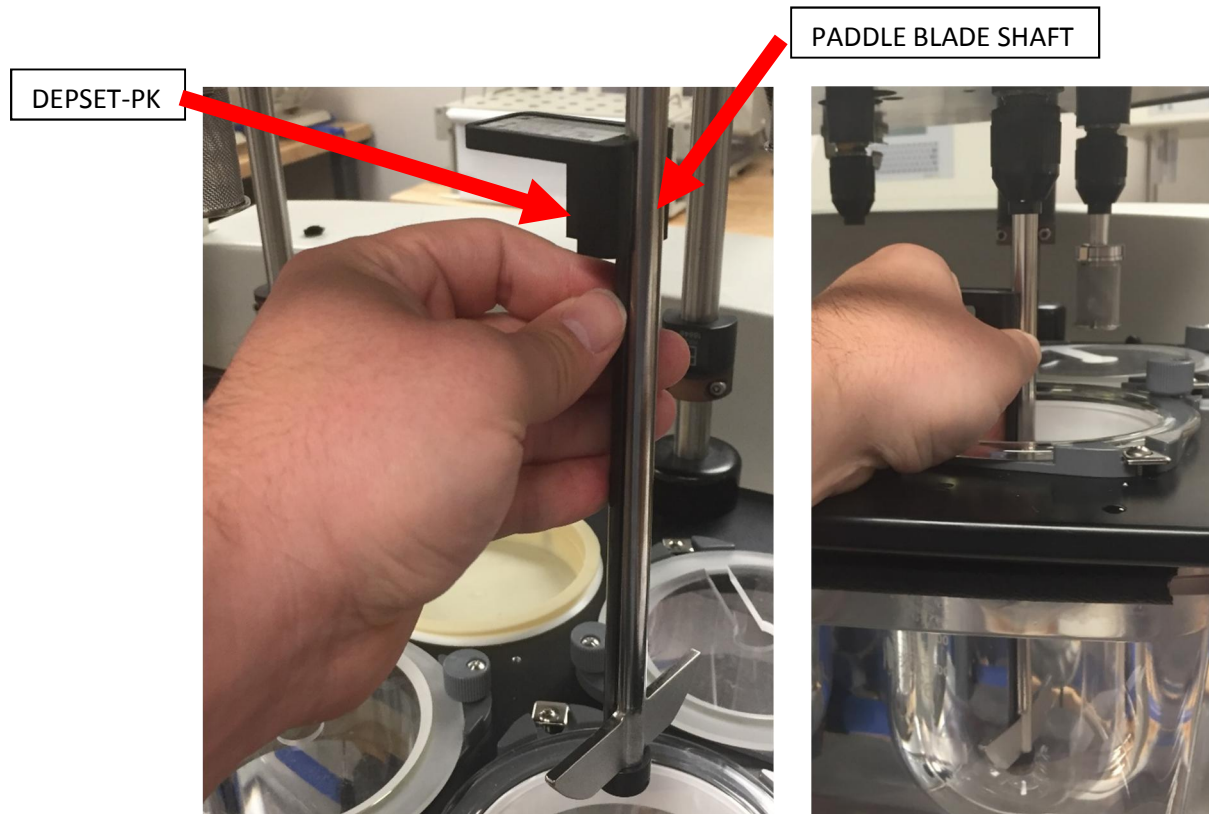
Loosen the spindle chuck or shaft collar so that the paddle shaft easily slides up and down in the spindle.

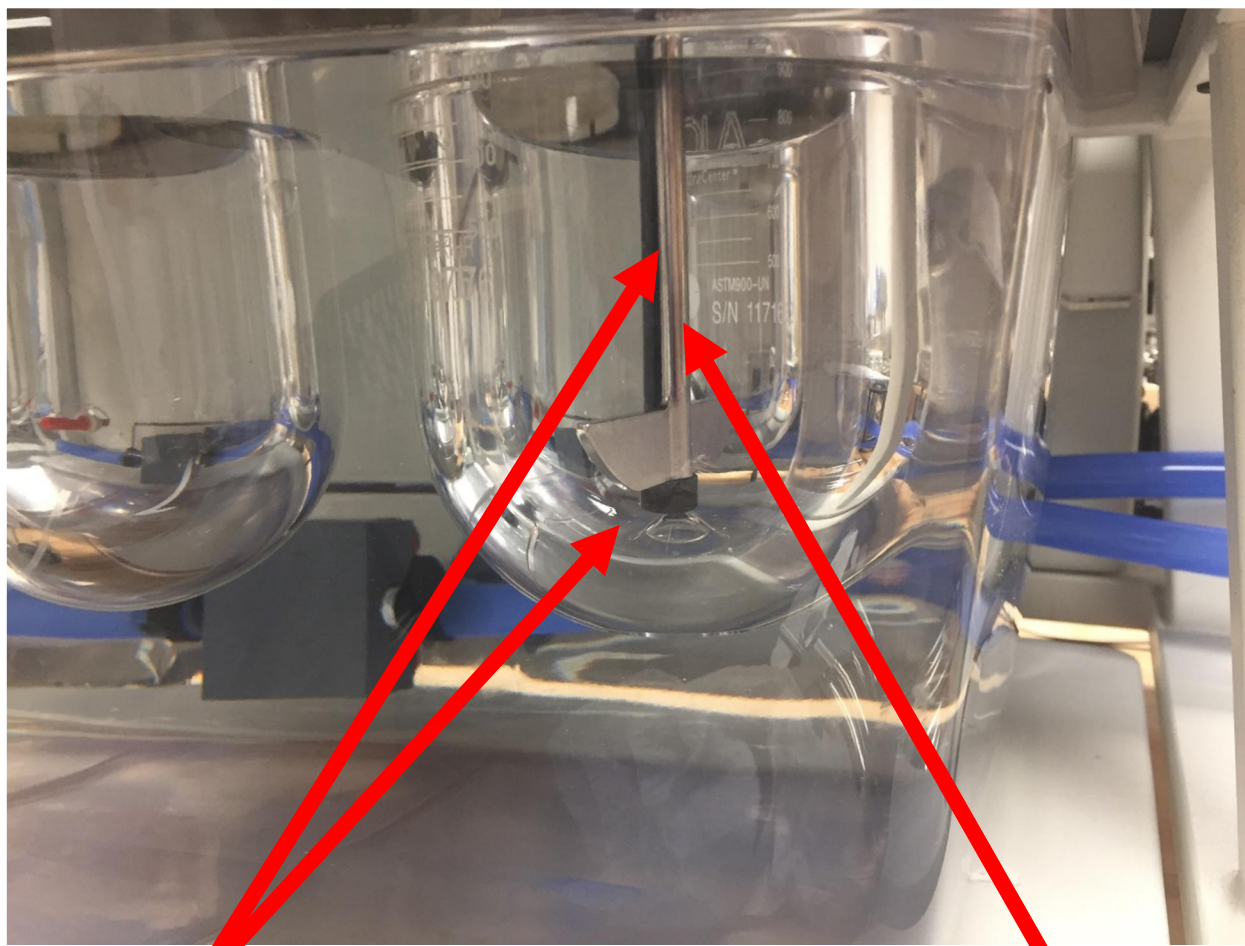


YOUR DISSOLUTION SPECIALISTS

Step 3:

Place DEPSET-PK tool up against the paddle blade shaft. Slide the DEPSET-PK tool and up the shaft so it is against the bottom of the paddle as shown. While holding the DEPSET-PK in place, lower the shaft until the bottom of the DEPSET-PK is against the top of the peak feature in the bottom of the vessel. In this position, the paddle blade will be at the correct height.





DEPSET-PK

PADDLE BLADE SHAFT

Step 4:

While keeping the DEPSET-PK and paddle blade shaft in this position, tighten the spindle chuck or shaft collar to secure the shaft in place to the proper height. Remove the DEPSET-PK tool. The height is now set properly.